

USER MANUAL

4K Tiny Portable Pov Camera

— 4K HD • IP68 • EIS • Tiny • Light Weight • Long battery life —

N9



Made in China



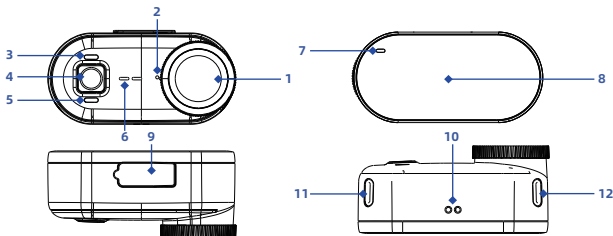
Contents

OVERVIEW OF CAMERA	01
Camera Introduction	01
Specification	02
Camera Operation Instructions	03-04
OVERVIEW OF ACTION POD	05
Introduction	05
Specification	05
Camera Installation	06-07
GETTING STARTED	07
Charging	07
STANDARD ACCESSORIES	08
Magnet Pendant	08
Camera Frame	09
Magnet Easy Clip	10
CONNECTING TO WIFI APP	11
Download and Install Viipulse app	11
Turn On / Off Camera Wi-Fi	11
Connect to the "Viipulse" APP	12
MAINTENANCE	12
Underwater Usage Notes	12
IP68 Waterproof Conditions	12-13
COMMON ISSUES	14
Contact Us	15

OVERVIEW OF CAMERA

This ultra-compact camera is built for all-weather adventure. Despite its tiny size, it's equipped with 6-axis gyroscope EIS technology that delivers incredibly stable 4K video. Featuring a waterproof seal and a hydrophobic coating, it achieves an IP68 rating, making it impervious to rain, snow, and water immersion. This weatherproof and pocket-sized design unlocks any filming scenario and simplifies your vlogging journey. With its magnetic mounting system and versatile accessories, get creative and capture angles like never before. Experience the power of a tiny camera that doesn't compromise.

■ Camera Introduction



- | | |
|--|--|
| 1. Lens | 7. Charging Indicator (Red) |
| 2. Internal Microphone | 8. Magnetic Mounting Base |
| 3. Wi-Fi Indicator (Blue) | 9. Waterproof Seal for Type-C Port |
| 4. Multi-Function Button (Power/Shutter) | 10. Magnetic Charging Connector (for Action Pod) |
| 5. Power Indicator (Green) | 11. Quick-Release Locking Slot 1 |
| 6. Speaker | 12. Quick-Release Locking Slot 2 |

Notes: The camera is equipped with a built-in strong magnetic module. Patients wearing pacemakers are not allowed to use it!

■ Specification

Input	5V 2A
Video Resolution	4K
Gyroscope	6-axis gyroscope
Wi-Fi	Embedded Wi-Fi module
Speaker	0.5W
Memory	Internal EMMC Memory
Working Temperature	0°F to 104°F/0 C to 40 C
Charging Temperature	0°F to 104°F/0 C to 40 C
Waterproof Degree	IP68
Battery Capacity	490mAh
Size	58.6mm*28.6mm*26.7mm
Weight	43g

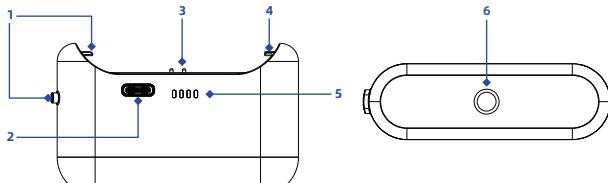
■ Camera Operation Instructions

Camera Status	BUTTON OPERATION	INDICATOR LIGHT STATUS	PROMPT SOUND
Power on	In the power-off status, press and hold the power button 2 seconds	Green & blue light on and flashing 3 times, then solid green.	Emit a boot-up sound
Power off	In the power-on status, press and hold the power button 2 seconds	Flashing green and blue three times, then off.	Emit a shutdown sound
Start recording video	In the standby/hibernate status, press the power button once	Flashing Green	Emit a beep
Stop recording video	Press once during recording	Solid Green	Emit three rapid beeps
Turn on Wi-Fi	In standby status, double press the power button (no app connection, Wi-Fi will automatically turn off after 3 minutes)	Solid blue	
Turn off Wi-Fi	Double press again	Blue light off, solid green.	
Charging via camera's Type-C port		Solid red (turn off when fully charged)	

Camera Status	BUTTON OPERATION	INDICATOR LIGHT STATUS	PROMPT SOUND
Hibernate	After no operation for 1 minute in standby status	All lights off	
Standby /Fully Charged		Solid green	
Insuffi- cient storage		Flashing green and blue five times, then off.	Emit an alarm sound
Low battery		Flashing red rapidly	Emit low battery warning sound 3 times every 20 seconds
Record- ing on the APP		Blue light stays on, green light flashes	
Data trans- mission	1: Connect the camera to the computer using a data cable 2:Open "My Computer" and find the N9 folder and enter.	Solid green	
Forced Shut- down	When the camera malfunctions and cannot be used, long press the Power button for 10 seconds to force the camera to shut down.		

OVERVIEW OF ACTION POD

■ Introduction



1 Release Button + Latch

2. USB-C Charge port

3. Magnetic Charging Port (for camera)

4. Fixed Buckle

5. Battery Indicator

6. 1/4 Mounting Point

■ Specification

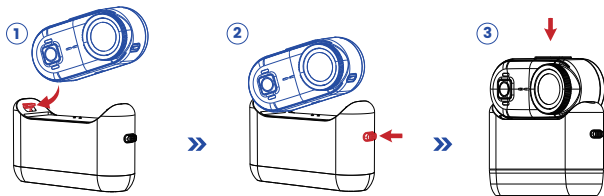
Tips: Utilize the 1/4 mounting point on the bottom of the Action Pod, if needed, with other accessories, such as a selfie stick.

Input	Working Temperature	Charging Temperature	Battery Capacity	Waterproof Degree	Size	Weight
5V 2A	0°F to 104°F / 0°C to 40°C	0°F to 104°F / 0°C to 40°C	1300mAh	Not Waterproof	69mm*40mm*21.5mm	50g

■ Camera Installation

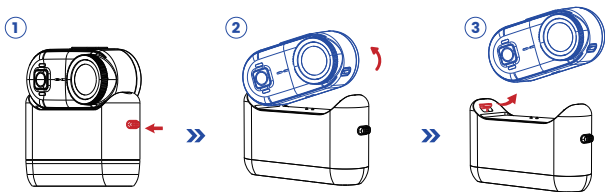
• Install the camera onto the action pod.

1. Insert **Mounting Port 2** (near the camera button) into the **Fixed Buckle** of the action pod at approximately 20 degrees, ensuring that the magnetic contacts on the camera and action pod are aligned. (Refer to Step 1)
2. Press the **Release Button** of the action pod to make the **Activity Latch** of the action pod pop open, and slowly place the other end of the camera flat on the action pod. (Refer to Step 2)
3. Release the **Release Button** and gently press the camera from the top to ensure that the action pod's **Activity Latch** is securely fastened to the **Mounting Port 1** near the camera lens. (Refer to Step 3)



• Remove the camera from the action pod.

1. Press the **Release Button** on the action pod to release the **Activity Latch**; (Refer to Step 1 following)
2. Gently lift the camera 10 to 20 degrees from the **Activity Latch** of the action pod; (Refer to Step 2 following)
3. Take the camera out of the **Fixed Buckle** of the action pod. (Refer to Step 3 following)



Notes: When installing the camera into the Action Pod, make sure the back of the camera (back of the lens) and the Action Pod indicator light are on the same side.

GETTING STARTED

Hello!

Welcome to your new camera. To get a better camera experience, please fully charge the camera for the first time by the following methods:

■ Charging

1. Connect the camera to USB power supply (5V/1-2A recommended) with type-C cable in the box. While charging, the indicator light on the back of camera will be solid red. Once the red indicator light turns off, the camera is fully charged.
2. Place the camera onto the action pod in correct installation method.

Notes: Connect to the action pod in standby mode, the camera will automatically shut down after 5 minutes, but it can still be charged.

STANDARD ACCESSORIES

The camera can be equipped with the following standard accessories to flexibly expand the camera position, helping to better complete shooting in various scenes.

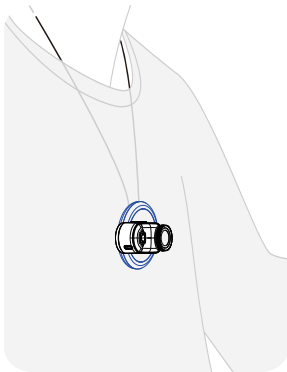
■ Magnet Pendant

How to use: (As shown right)

1. Adjust the length of the lanyard by turning the knob on the magnet pendant;
2. Wear the magnet pendant inside your clothes with the camera image facing forward;
3. Adjust the magnet pendant to the appropriate shooting height as needed;
4. Attach the camera to the magnet pendant over your clothes.

Safety Warning!

The Magnet Pendant has a lanyard, the lanyard may cause entanglement around the neck of children, posing a fatal risk of suffocation! Children should use them under adult supervision to avoid strangulation or suffocation. Please keep the product out of reach of children and store it promptly when not in use!

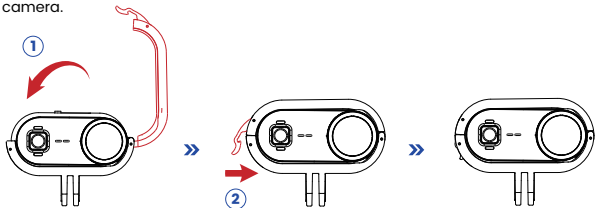


■ Camera Frame

• **How to install:** (As shown)

1. Press and hold the buckles on the two sides of the Quick Release Mount to make the buckles pop open;

2. Attach the camera to the Quick Release Mount, and release the buckles to lock the camera.



Tips: After installation, it is recommended to gently shake the camera back and forth to ensure that it is firmly locked and avoid the camera falling off during use.

• **How to detach:** (As shown)

1. Press and hold the buckles on the two sides of the Quick Release Mount to make the buckles pop open;

2. Remove the camera from the Quick Release Mount;

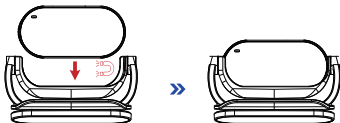
Tips: Utilize the 1/4 mounting point on the bottom of the Quick Release Mount, if needed, with other accessories, such as a selfie stick.



■ Magnet Easy Clip

• How to use:

1. mount the camera to the Magnet Easy Clip in the correct direction: the back of the camera and the clip are on the same side, as shown below;



2. Widen the Magnet Easy Clip and clip it onto the brim of a baseball cap or pet collar.

3. Adjust the angle of the Magnet Easy Clip as needed.



Notes:

- The Camera, Magnet Pendant, Quick Release Mount and Magnet Easy Clip contain magnets. Keep it away from pacemakers and other devices to avoid interference.
- Do not use magnet pendant with thick clothes; it could weaken the magnetic hold and cause the camera to fall off.
- When using the above accessories with the camera, it is not recommended to use it during high-intensity activities, otherwise there is a risk of the camera falling off or getting damaged during jumps or sudden movements.
- When connecting the base to other accessories, ensure the camera is secure, so as to avoid damage to the accessories and the camera.

CONNECTING TO Wi-Fi APP

The Wi-Fi App lets you control your camera remotely using a smart phone or tablet. Features include full camera control, live preview, playback and sharing of selected content and more.

■ Download and Install Viipulse app

Way 1: Download the **Viipulse** App to your phone from Google Play or Apple App Store.

Way 2: Scan the QR code below to download the **Viipulse** App or to your phone.



Android 7.0
or later



iOS 10.0
or later



Notes:

Google, Android, Google play, App Store and other marks are the trademarks of Google LLC.

■ Turn On / Off Camera Wi-Fi

1. Verify the camera is turned on, double Press the button to turn on the camera's Wi-Fi . If the indicator light is solid blue, the camera's Wi-Fi is on.
2. Verify the camera's Wi-Fi is on, double press the button again to turn off the camera's Wi-Fi . If the indicator light is solid green, the camera's Wi-Fi is off.

■ Connect to the “Viipulse” APP

1. Turn on **Camera's** Wi-Fi;
2. Turn on Wi-Fi Settings of your phone, connect to the Wi-Fi SSID named “N9_Cam_**** (Random serial number)”;
3. Enter the password: “12345678”;

Launch the app “**Viipulse**” on your phone.

Notes:

- When the camera Wi-Fi is turned on and there is no APP connection within 3 minutes, the camera will automatically turn off Wi-Fi.
- It is recommended to turn off the camera Wi-Fi to maximize battery life when not using the app.

MAINTENANCE

■ Underwater Usage Notes

This camera is splash, water, and dust resistant. It was tested under controlled laboratory conditions with a rating of IP68 under IEC Standard 60529 (maximum depth of 10 meters (33ft) for up to 30 minutes). Splash, water, and dust resistance are not permanent conditions, and this resistance might decrease as a result of normal wear.

■ IP68 Waterproof Conditions :

- Clear water at normal temperature, tested at a depth of 10 meters (33ft).
- The test duration is 30 minutes.
- The temperature difference between the water and the product must not exceed 5 degrees Celsius.

To ensure the camera's waterproof performance, please carefully follow the operation and maintenance precautions listed below. **Damage resulting from improper operation or maintenance that voids the waterproof seal is not covered by the warranty.**

- Before underwater use, always ensure that the waterproof silicone seal on the Type-C port is clean. Even a single hair or grain of sand can compromise the seal and cause leakage.
- Before underwater use, always check that the waterproof silicone seal on the Type-C port is not damaged, hardened, or cracked. A compromised seal can cause water leakage.
- Before underwater use, press the Type-C port's waterproof silicone seal firmly to ensure it is fully and tightly attached to the body. An improperly sealed port will render the camera non-waterproof.
- Avoid high-speed water entries (e.g., jumping) with the camera. The impact force can compromise the seals and cause water leakage.
- Protect the camera from falls and impacts. Dropping the camera can damage the watertight seals on the body, compromising its waterproof integrity.
- Avoid operating the camera for extended periods (>1 hour) outside the recommended temperature range (**0°C to 40°C / 32°F to 104°F**) or in humid environments such as saunas or hot springs.

COMMON ISSUES

Problem	Cause	Solution
Playing videos on the app lags and is not smooth	Network latency issue, normal phenomenon	Download the video to your phone for playing back
Forgot Wi-Fi password		Change password in app settings
The image does not flip when the camera is reversed 180 degrees		Turn on "Flip" in the app settings.
Cannot search camera Wi-Fi		Turn off the camera, restart and turn on the camera Wi-Fi.
Can the camera shoot vertically		Not supported, only supports horizontal shooting
Heating up during the recording process		4K high-definition recording, normal phenomenon

Specifications could be subject to modification due to updating without notice, please refer to the actual product as the standard form. If you need the newest updated software, please contact our after-sales service team!

Contact Us

For any inquiries, issues or comments concerning our products, please send E-mail or call us. We will respond as soon as possible.

E-Mail: cs@onlincam.com



Whats App



Email



Facebook