

USER MANUAL

N7

4K Tiny Portable Vlogging Camera

4K UHD • EIS • Tiny • Light Weight • Long battery life



Contents

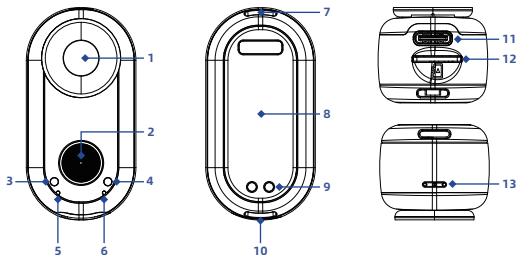
OVERVIEW OF CAMERA	01
Camera Introduction	01
Specification	02
Camera Operation Instructions	03-04
OVERVIEW OF ACTION POD	05
Introduction	05
Specification	05
Camera Installation	06
GETTING STARTED	07
Micro SD Card	07
Charging	07-08
Power on/off	08
Recording Video	09
PHOTO	09
STANDARD ACCESSORIES	10
Magnet Pendant	10
Quick Release Mount	11
Magnet Easy Clip	12
Waterproof Case	12-13
Usage Notes	14
CONNECTING TO WIFI APP	15
Download and Install Viipulse app	15
Turn On / Off Camera Wi-Fi	15
Connect to the "Viipulse" APP	15-16
PLAYBACK YOUR CONTENT	17
DOWNLOAD, PLAYBACK, DELETE YOUR CONTENTS	17
Download/playback/delete files on APP	17
Download/playback/delete files on computers and other devices	17-18
Contact Us	18

OVERVIEW OF CAMERA

EN

The camera is an all-weather Tiny Portable Vlogging Camera, equipped with 6-axis gyroscope EIS technology, which can capture stable videos at 4K. It has a wide variety of the leading features for digital video recording, photo shooting, audio recording. This action camera comes with a waterproof case, offering excellent waterproof performance and effectively protecting the camera from rain, snow, and splashes, easily handling various shooting scenarios and making your vlog experience more convenient. With its magnetic design and array of handy accessories, get creative and film angles no other camera can handle. That's the power of tiny.

■ Camera Introduction



- ① Lens
- ② Camera Button
- ③ Blue Light (Wi-Fi on indicator)
- ④ Green Light (Rec.indicator)
- ⑤ Red Light (Charging indicator)
- ⑥ Red Light (Low Battery Indicator)
- ⑦ Mounting Port 1
- ⑧ Magnetic Back Board
- ⑨ Charging Point (only for action pod)
- ⑩ Mounting Port 2
- ⑪ USB-C Port(for Charging/ Data)
- ⑫ Micro SD Card Port
- ⑬ Internal Microphone

Note: The camera is equipped with a built-in strong magnetic module. Patients wearing pacemakers are not allowed to use it!

■ Specification

EN

Input	5V 1-2A
Video Resolution	4K
Gyroscope	6-axis gyroscope
Wi-Fi	Embedded WIFI module
Speaker	Internal buzzer
Memory	Support U3 grade Micro SD card (32G~256G)
Working Temperature	0°F to 104°F / 0℃ to 40℃
Charging Temperature	0°F to 104°F / 0℃ to 40℃
Waterproof Degree	30M with waterproof case
Battery Capacity	490mAh
Size	50mm*26mm*23mm
Weight	31g

■ Camera Operation Instructions

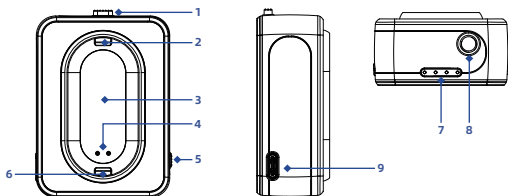
EN

Camera Status	BUTTON OPERATION	INDICATOR LIGHT STATUS	PROMPT SOUND
Power on	In power-off status, Long press the camera button 2 seconds	Green & blue light on and flashing 3 times, then solid green.	Emit 3 beeps
Power off	In power-on status, press and hold the power button 2 seconds	Flashing green and blue three times, then off.	Emit 5 beeps
Start recording video	With the device powered on, press the power button once.	Flashing Green	Emit 1 beep
Stop recording video	Press once during recording	Solid Green	Emit 1 beep, then Emit 3 beeps rapidly
Turn on Wi-Fi	Double-press the power button (NO PHONE connection; Wi-Fi will automatically turn off after 3 minutes)	Solid blue	
Turn off Wi-Fi	Double Press again	Blue light off, solid green.	
Low battery		Flashing red rapidly	

Camera Status	BUTTON OPERATION	INDICATOR LIGHT STATUS	PROMPT SOUND
Charging		Flash red (turn off when fully charged)	
Insufficient storage			Emit 3 beeps twice
Card damaged			Emit 3 beeps twice
Recording on the APP		Blue light stays on, green light flashes	
Data transmission	1: Turn on camera 2: Connect the camera to the computer using a data cable 3: Open "My Computer" and find the N7 folder and enter.	solid green	

OVERVIEW OF ACTION POD

■ Introduction



1. Release Button

2. Latch 1

3. Magnetic Plate

4. Charging Point (for camera)

5. Battery Prompt Button

6. Latch 2

7. Battery Indicator

8. 1/4 Mounting Point

9. USB-C Charge port

Tips: • Click the charging button to activate charging, the battery level indicator light will turn on, double-click the charging button to stop charging, and the battery level indicator light will turn off.

• Utilize the 1/4 mounting point on the bottom of the Action Pod, if needed, with other accessories, such as a selfie stick.

■ Specification

Input	Working Temperature	Charging Temperature	Battery Capacity	Waterproof Degree	Size	Weight
5V 2A	0°F to 104°F / 0°C to 40°C	0°F to 104°F / 0°C to 40°C	1300mAh	Not Waterproof	66mm	56.5g

■ Camera Installation

EN

• Install the camera onto the action pod.

1. Keep the lens and release button facing upwards.
2. The camera will be magnetically attached, and the red charging indicator light in the lower left corner will illuminate, indicating that the camera is charging.

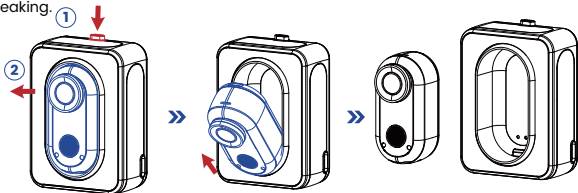
Note: If the lens and release button are not on the same side, the camera will not charge and will be difficult to remove.



• Remove the camera from the action pod.

1. Press and hold the release button on the action pod to release latch 1 (Refer to step 1)
2. Hold the lens ring and pull the camera out.

Tip: Do not forcefully take the camera vertically, otherwise there is a risk of latches breaking.



GETTING STARTED

EN

Hello!

Welcome to your new camera. To capture video and photos, you need a micro SD card (sold separately).

■ Micro SD Card

Use brand name memory cards that meet these requirements:

- micro SD, micro SDHC, or micro SDXC
- U3 rating
- Capacity up to 32GB ~ 256G (FAT32)

Tips: When the micro SD is first-used in this camera, the camera will automatically format the micro SD card, which will erase all contents. Please make sure that there are no other important files in the micro SD before use to prevent them from being deleted.

■ Charing

To get a better camera experience, please fully charge the camera for the first time by the following methods:

1.Connect the camera to USB power supply (5V/1-2A commended) with type-C cable in box. While charging,the indicator light on camera will be solid red. Once the red indicator light turns off, the camera is fully charged.

2.Place the camera into the action pod in correct installation method.

Tips: When charging, the camera charging indicator light will remain red. If the camera charging indicator light and the battery indicator light of the action pod are not on, you can click the charging button on the action pod to start charging the camera. At this time, both the camera charging light and the battery indicator light of the action pod will light up. Once the camera indicator light goes out, it means that the camera is fully charged. If you want to stop charging the camera, double-click the charging button on the action pod. At this time, both the camera charging light and the battery indicator light on the expansion pod will turn off.

Notes:

EN

- Install cameras that are not recording after being powered on or not connected to a phone into the action pod; the camera will automatically power off after 5 minutes but can still be charged.
- It is recommended to use a dedicated charger to charge the camera separately. If it is connected to a USB port on a computer or other portable power source, the power source may not be sufficient to charge both the camera and the action pod simultaneously.
- When the camera is installed in the expansion cabin and needs to be charged with an external power source, please directly connect the external power source to the USB interface of the expansion cabin to charge both the expansion cabin and the camera synchronously.

■ Power on/off

• Power on:

Press and hold the camera button for 2 seconds: After the blue and green lights remain on for 5 seconds, the blue and green lights flash alternately three times, and then the green light remains on. When the camera emits a startup sound, it indicates that the camera has been turned on.

• Power off:

Press and hold the camera button for 2 seconds: The blue and green lights flash alternately three times before turning off. When the camera emits a shutdown sound, the camera is already turned off.

Tips:

- To extend battery life, please ensure that the device is turned off when not in use or stored for a long time

■ Recording Video

- **To start recording:**

Short press the camera button. When the green light of the camera flashes and emit a beep, the camera starts recording.

- **To stop recording:**

Short press the camera button again while recording. The green light stops flashing, emits one beep, and then emits three beeps, indicating that recording has stopped.

■ PHOTO

- **To take a photo:**

Verified your camera connect with the Viipulse App and in photo mode, press shutter icon on your phone, when the camera will emit a beep, a photo has took.

STANDARD ACCESSORIES

The camera can be equipped with the following standard accessories to flexibly expand the camera position, helping to better complete shooting in various scenes.

■ Magnet Pendant

How to use: (As shown right)

- 1.Adjust the length of the lanyard by turning the knob on the magnet pendant;
- 2.Wear the magnet pendant inside your clothes with the camera image facing forward;
- 3.Adjust the magnet pendant to the appropriate shooting height as needed;
- 4.Attach the camera to the magnet pendant covered by your clothes.

Tips:

This camera can only shoot vertically

Safety Warning!

The Magnet Pendant have lanyard, the lanyard may cause entanglement around the neck of children, posing a fatal risk of suffocation! Children should use them under adult supervision to avoid strangulation or suffocation. Please keep the product out of reach of children and store it promptly when not in use!



■ Quick Release Mount

EN

• How to install:

1. Press and hold the lock on the top of the Quick Release Mount to make the lock pop open (Please refer to step 1)
2. Insert the camera into the bottom fixed lock of the Quick Release Mount at an angle of approximately 20-30 degrees (Please refer to step 2);
3. Place the other end of the camera flat on the Quick Release Mount;
4. Release the lock at the top of the Quick Release Mount to close and firmly grip the camera.

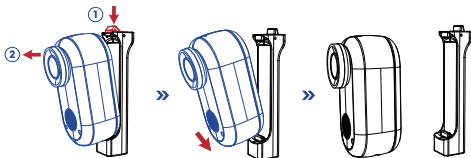
Tips: • After installation, it is recommended to gently shake the camera back and forth to ensure that it is firmly locked and avoid the camera falling off during use.

• Utilize the 1/4 mounting point on the bottom of the Quick Release Mount, if needed, with other accessories, such as a selfie stick.



• How to detach:

1. Press and hold the lock on the top of the Quick Release Mount to make it pop open; (Please refer to step 1)
2. Remove the camera from the Quick Release Mount; (Please refer to step 2)

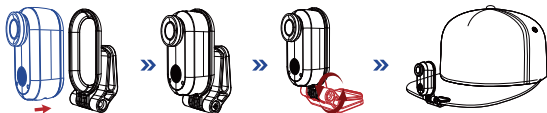


■ Magnet Easy Clip

EN

• How to use:

1. Mount the camera to the Magnet Easy Clip in the correct direction
2. Widen the Magnet Easy Clip and clip it onto the brim of a baseball cap or pet collar.
3. Adjust the angle of the Magnet Easy Clip as need.



Notes:

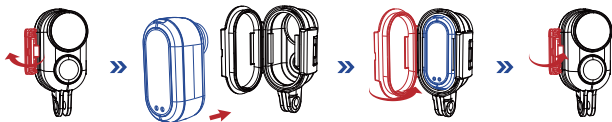
- The Camera, Magnet Pendant, Quick Release Mount and Magnet Easy Clip contain magnets. Keep it away from pacemakers and other devices to avoid interference.
- Do not use magnet pendant with thick clothes; it could weaken the magnetic hold and cause the camera to fall off.
- When using the above accessories with the camera, it is not recommended to use it during high-intensity activities, otherwise there is a risk of the camera falling off or getting damaged during jumps or sudden movements.
- When connecting the base to other accessories, ensure the camera is secure, so as to avoid damage to the accessories and the camera.

■ Waterproof Case

Specially designed for diving, surfing, snorkeling and other water sports activities. The waterproof case does not only offer greater waterproof protection to your camera, it also offers extra protection against dust, scratches and shocks. Light and easy to carry, excellent PMMA material endows it with high quality. With the use of the waterproof case, you can record activities even 30M under water and it won't damage the shooting effect, clear and vivid. Your movement and photographic effect won't be affected by anti-surf pressure. Convenient to link camera with other accessories mount through this waterproof case.

• How to install camera into waterproof case:

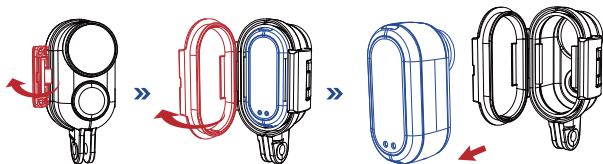
1. Pry open the black locking buckle on the side of the waterproof case.
2. Open the back cover of the waterproof case and insert the camera horizontally into the housing.
3. Close the back cover and ensure the silicone seal on the back cover is fully pressed against the main body of the waterproof case.
4. Fasten the black latch onto the back cover and press down the black latch.



Tip: To achieve better waterproof performance, the voice record within the waterproof case will be weakened.

• How to detach camera from the waterproof case:

1. Pry open the black locking buckle on the side of the waterproof case.
2. Open the back cover of the waterproof housing and remove the camera horizontally from the housing.



■ Usage Notes ⚠

EN

In order to ensure the waterproof performance, please carefully refer to the operation and maintenance precautions as following. The machine is not waterproof due to improper operation and improper maintenance, which is not covered by the warranty.

- In order to capture a clear video or photo, please tear off the lens protection film of the waterproof shell before use, and protect well the lens window from scratch after use.
- Before sealing the waterproof case, keep the camera housing's White Silicone Seal Ring clean, a single hair or grain of sand cause a leak. You can test by closing the case without inserting the camera. Submerge the case completely in the water for about a minute. Remove the case from the water, dry off its exterior with a towel, and then open the case. If the interior is dry, the case is safe for use under water.
- Before sealing the waterproof case, make sure the waterproof case is sealed well before use. If the white silicone sealing ring is found to be hardened, deformed or damaged, please stop using this water tank and replace the new waterproof shell in time
- Please dry it in time after use, otherwise the waterproof shell metal button will dust and reduce the waterproof performance. After use in in seawater or seaside, you will need to rinse the outside of the housing with fresh water and then dry. This will prevent corrosion of the hinge pin and salt buildup in the seal, which can cause failure. Do not flush the interior with water
- When use the camera with the waterproof in low temperature, such as Winter, Rainy Day, Underwater and so on, please do the anti fogging treatment so as to avoid the blurred video. It is recommended to add anti-fog film; insert the anti-fog film into the waterproof case to prevent the lens from fogging in low temperature or humid environment;
- Keep it safe from falling and dropping and high temperature above 70°C.
- Waterproof shell is vulnerable product, we strongly recommend ,according to the usage of the environment and frequency, to replace the waterproof shell in time.

CONNECTING TO Wi-Fi APP

The Wi-Fi App lets you control your camera remotely using a smart phone or tablet. Features include full camera control, live preview, playback and sharing of selected content and more.

■ Download and Install Viipulse app

Way 1: Download the **Viipulse** App to your phone from Google Play or Apple App Store.

Way 2: Scan the QR code below to download the **Viipulse** App or to your phone.



Android 7.0
or later



iOS 10.0
or later



■ Turn On / Off Camera Wi-Fi

1. Verify the camera is turned on, double Press the button to turn on the camera's Wi-Fi . If the indicator light is solid blue, the camera's Wi-Fi is on.
2. Verify the camera's Wi-Fi is on, double press the button again to turn off the camera's Wi-Fi . If the blue indicator light is off, the camera's wifi is off.

■ Connect to the Viipulse APP

1. Turn on **Camera's** Wi-Fi;
2. Turn on Wi-Fi Settings of your phone, connect to the Wi-Fi SSID named "N7_Cam_XXXX" (Random erlal number);
3. Enter the password: "12345678";

Launch the app "**Viipulse**" on your phone.

Tips:

EN

- When the camera Wi-Fi is turned on and there is no APP connection within 3 minutes, the camera will automatically turn off Wi-Fi.
- It is recommended to turn off the camera WIFI to maximizing battery life when not using the app.

Notes:

- To ensure a stable WiFi signal connection between the phone and the camera, it is recommended to turn off the mobile network on the phone after a successful WiFi connection between the phone and the camera.
- Once the camera's WiFi is connected, it will give you a "no Internet connection" or "weak security" notice, because your mobile signal is blocked. You can ignore it and continue the application to contact this connection screen for reference only.
- Camera WiFi is a point-to-point signal source that only supports one smartphone connection at a time, and does not support two or more smartphone connections. If two mobile phones are simultaneously enabled for WiFi, one phone will successfully connect to the camera's WiFi, while the other will no longer be connected to the camera and may even interfere with signal transmission.
- The WiFi bandwidth of the camera is relatively narrow, and its signal is affected by factors such as distance, other signals, electromagnetic waves, and obstacles. A signal delay of 2 to 5 seconds is normal. The WiFi distance is approximately 5 to 8 meters.
- When the phone and camera are connected via WiFi, the camera's battery level will increase. The temperature of the camera will rapidly increase, and the consumption of the camera battery will also increase. This is a normal phenomenon.
- Due to the wide variety of mobile phones in the market and the constant updates of mobile phone systems, WIFI applications require time to synchronize updates. If WIFI applications are not compatible with your phone, please let us know your phone model and system version information, and we will synchronize your phone as soon as possible.
- If you find that your phone cannot connect to the camera's WIFI, please confirm if your connection is correct. If so, it still cannot be connected. Please remove the camera's WiFi SSID from your phone's WiFi settings and reconnect. If necessary, you can also remove the WIFI application from your phone, download and reinstall it

PLAYBACK YOUR CONTENT

You can playback your content on the camera, computer, phone or tablet. You can also play back content by inserting the memory card directly into a device, such as a computer or compatible TV. With this method, playback resolution depends on the resolution of the device and its ability to play back that resolution.

DOWNLOAD、PLAYBACK、DELETE YOUR CONTENTS

You can download/playback/delete content on app, computers, tablets, etc. You can also download/playback/delete content by directly connecting the camera to related devices such as a computer or compatible TV. Using this method, the playback resolution depends on the device's resolution and its ability to play that resolution.

■ Download/playback/delete files on APP.

Tips:

- Due to limitations in camera WIFI bandwidth, downloading or replaying files larger than 1GB, files longer than 5 minutes, or multiple files downloaded simultaneously may take several minutes to load. Connecting the camera to a computer for faster download and playback will provide a better experience.
- Due to limitations in camera WIFI bandwidth and, the camera may lower the preview resolution and online playback resolution. In order to obtain true resolution, please download before playback.

■ Download/playback/delete files on computers and other devices.

- Method 1: To download/playback/delete videos and photos on a computer, you must first transfer these files to the computer.

To use the card reader (sold separately), connect the card reader to the computer and then insert the micro SD card.

- Method 2: Ensure the camera is powered on. First, connect the USB end of the data cable to the computer, then insert the Type-C end of the cable into the camera. At this point, the camera will function as an external hard drive, allowing you to transfer multimedia files from the camera to the computer

Notes:

1. When connecting to the computer, ensure the camera is powered on; otherwise, the computer cannot recognize or read the camera information.
2. The playback resolution depends on the device's resolution and its capability to play that resolution.
3. QuickTime Player has excellent compatibility with MOV format video files. We strongly recommend using QuickTime Player to play video files on your computer.

Specification could be subject to modification due to updating without notice, please regard the actual product as the standard form. If need the newest updated software, please contact our after sale service team!

CONTACT US

For any inquiries, issues or comments concerning our products, please send E-mail to the

address below or call us. We will respond as soon as possible.



Whats App



Email



Facebook