

Action camera User Manual

Onlincam C36 / A36

Made in China



INTRODUCTION

Action Camera is a high-definition digital motion video recording device, created to reach market demand. It has a wide variety of the leading features for digital video recording, photo shooting, audio recording with screen display and detachable battery. Best suitable for vehicle recording, outdoor sports, home security, diving and more related activities. Allowing you to enjoy the moments while capturing every scene anytime, anywhere.

PRODUCT OVERVIEW



■ Product Instructions

- 1 - Lens
- 2 - 1.4-inch Front Screen
- 3 - 2.0-inch Touch Screen
- 4 - Working & Charging Indicator
- 5 - Shutter Button / Select Button
- 6 - Power Button / Mode Button
- 7 - Battery Door
- 8 - Bracket Hole
- 9 - Speaker
- 10 - Built-in Mic
- 11 - USB-C Port
- 12 - Lanyard Hole
- 13 - Up Button
- 14 - Down Button

■ Button Operation Instructions

● **Power Button / Mode Button:**

- In the OFF state, press Power Button shortly to turn on the camera.
- In the ON state, press and hold Power Button for seconds to turn off the camera.
- In preview mode, press Power Button shortly to switch shooting mode.
- In the main settings menu, press Power Button shortly to cycle through the settings.
- In the sub settings menu, press Power Button shortly to exit the current settings.
- In playback / mode selection mode, short Power Button shortly to return to the previous option.

● **Shutter Button / Select Button:**

- In video mode, press Shutter Button shortly to start/stop recording video.
- In photo mode, press Shutter Button shortly to capture photos.
- In video / photo mode, press and hold Shutter Button for seconds to enter into mode selection menu.
- In the setting/playback mode, press Shutter Button shortly to select the desired option.
- In the video playback mode, press Shutter Button shortly to start/pause play-backing the video file.

● **Up Button:**

- In video mode, press and hold the Up Button for seconds to turn on the camera's Wi-Fi.
- In Wi-Fi mode, press the Up Button to turn off the camera's Wi-Fi.
- In video mode, press Up Button shortly to enter into setting mode.
- In the playback mode / sub setting menu / mode selection menu, press Up Button shortly to switch to the previous option.
- In the video /photo playback mode, press and hold Up Button for seconds to enter into delete menu.

● **Down Button:**

- In video / photo mode, press and hold Down Button for seconds to switch between the front screen or the rear screen to display.
- In video / photo mode, press Down Button shortly to enter into playback mode (SD card inserted).
- In the playback mode / sub seting menu / mode selection menu, press Down Button shortly to switch to the next option.

Notes:

- ❖ You can't switch screens during recording or in Setting Mode.
- ❖ Front and rear screens cannot work at the same time.
- ❖ The 1.4-inch front screen has no operation function and is only used for preview.

GETTING STARTED

Hello!

Welcome to your new camera. To capture video and photos, you need a micro SD card.(sold separately).

■ Storage / Micro SD Card

We strongly recommend to use the branded memory cards purchased from regular channels for maximum reliability and stability during recording and in high vibration activities.

Use brand name memory cards that meet these requirements:

- micro SD, micro SDHC, or micro SDXC
- **UHS-III rating** at least for 4K Video resolution
(at least 60MB/S or above read and writing speed)
- Capacity up to 128GB (FAT32)
(The bigger memory may have an effect on the compatibility with the camera.)

Notes:

- ❖ Please format the micro SD card first in this camera before using.
- ❖ To keep your micro SD card in good condition, reformat it on a regular basis. Reformatting erases all of your content, so be sure to offload your content first.
- ❖ FAT32 format Micro SD card stops recording when the storage of each file is over 4 GB and starts to record again on a new file.

■ Powering On / Off

● Power On:

Press the Power Button shortly. The camera beeps while the camera status light is on. When information appears on the screen, your camera is on.

● Power Off:

Press and hold the Power Button for seconds. The camera beeps while the camera status light is off. When information disappears on the screen, your camera is off.

■ Start / Stop recording video

To record video,verify the camera is in desired Video Setting option,such as Loop

Video/Time-lapse/Slow Motion etc.

● **To Start Recording:**

Press the Shutter Button. The camera's blue working indicator will flash and a Red record time will show on the screen while recording.

● **To Stop Recording:**

Press the Shutter Button. The camera working indicator stop flashing on the screen to indicate recording has stopped

Notes:

- ✧ FAT32 format Micro SD card stops recording when the storage of each file is over 4 GB and starts to record again on a new file
- ✧ This camera automatically stops recording when the battery is out of power. Your video will saved before the camera powers off. The video will not be saved, and even the video will be damaged,if the batter is took out or loss power during recording.
- ✧ Due to the battery's characteristics and environmental temperature requirements, such as high temperatures can cause the battery to expand. In high temperature environments, especially in the summer, when you use this camera as a dash camera, we strongly recommend that you remove the battery and use the car power directly, but when the car's engine is turned off, the camera will immediately turn off, the date&time set and last video recorded will not be saved
- ✧ This camera automatically stops recording when the SD card is full,if the looping record function is turn off.

■ **Capture photos**

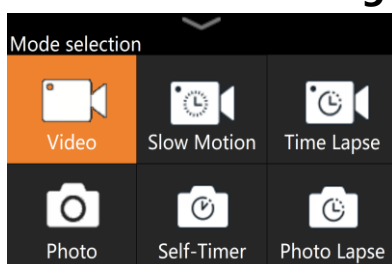
To capture photo,verify the camera is in desired Photo Setting option, such as Photo Lapse Photo/Burst Photo/Self-timer etc.

● **To capture photos:**

Press the Shutter Button. The camera will emit the camera shutter sound each time a photo is taken. (To stop Photo Lapse,Press the Shutter Button again)

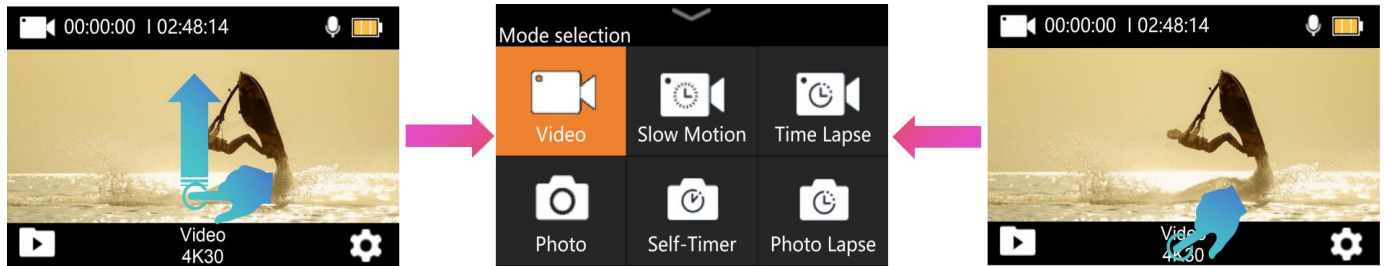
OVERVIEW OF SHOOTING MODES

There are 6 shooting modes: 3 Video modes+3 Photo modes

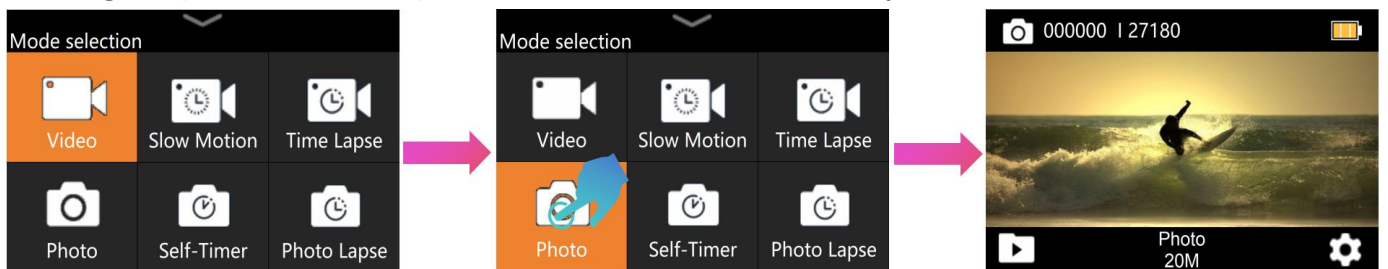


■ Mode Selection

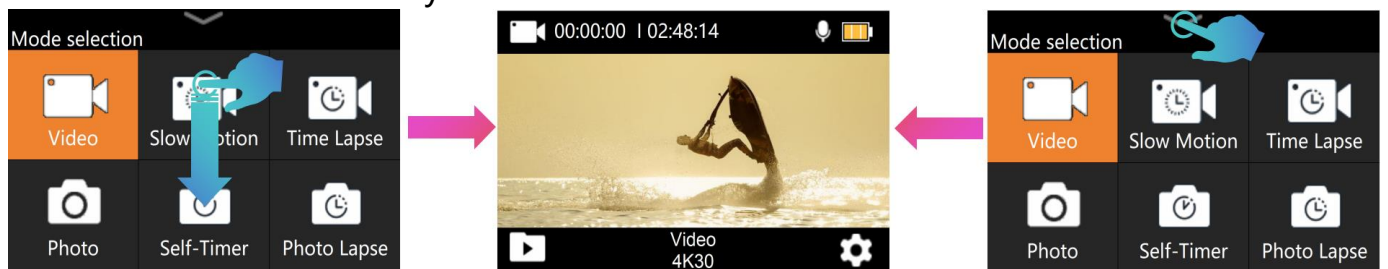
- In Video/Photo mode, quickly swipe up on the screen or tap on the "Mode Switch" icon or press and hold the Shutter Button for seconds to enter Mode Selection menu.



- Tap on the mode icon of any grid to quickly or press the Up/Down Button to locate the target option and then press the Shutter Button shortly to switch to the desired mode.



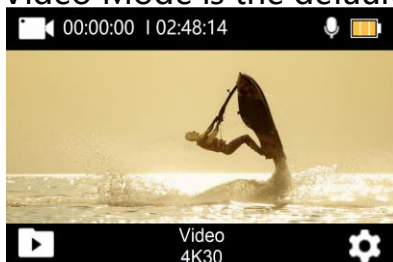
- To exit mode selection menu, Tap on the "exit" icon at the top of the screen or press the Power Button shortly.



■ 3 Video Modes: Video ,Slow Motion, Time Lapse Mode

● Video Mode

Video Mode is the default mode when you turn on the camera.



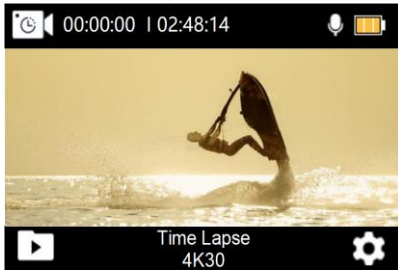
● Slow Motion Mode

Slow motion is an effect in film-making whereby time appears to be slowed down.



● Time Lapse Mode

Time Lapse Video creates video from frames captured at specific intervals. This option lets you capture a time lapse event and immediately view or share it as a video. Time Lapse Video is captured without audio.



■ 3 Photo Modes: Photo, Self-Time, Photo Lapse

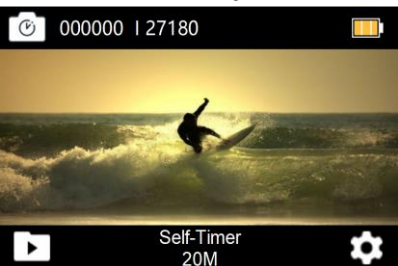
● Photo Mode

In Photo Mode, press Shutter Button shortly, the camera takes a photo. If Burst Photo is on, press Shutter Button shortly, the camera will continuously capture 3 or 5 photos.



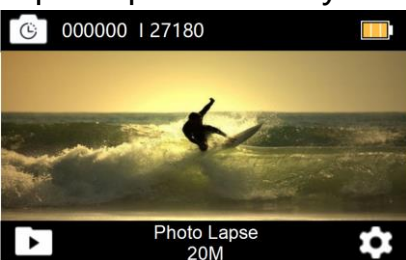
● Self-Timer Mode

A self-timer gives a delay between pressing the shutter release and the shutter's firing. It is most commonly used to let photographers to take a photo of themselves.



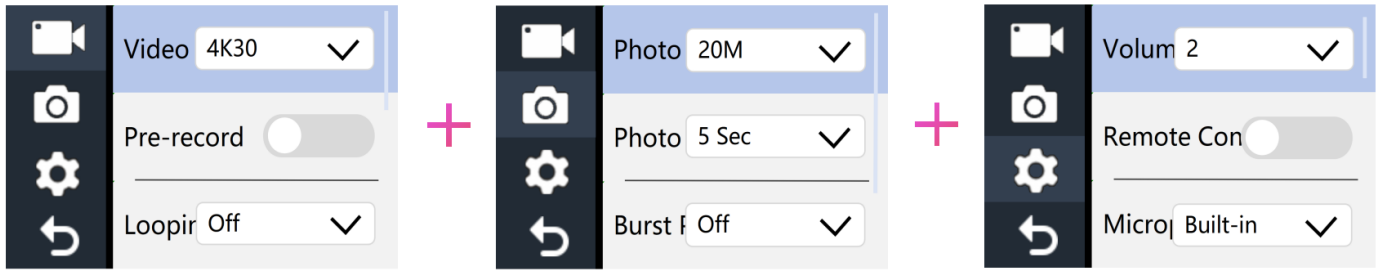
● Photo Lapse

Time Lapse Photo captures a series of photos at specified intervals. Use this mode to capture photos of any activity, then choose the best ones later.



CUSTOMIZING YOUR CAMERA

There are 3 Setting Modes: Video Setting, Photo Setting and System Setting.



Video Setting Mode

- 1) Verified in Video Mode, tap the "Settings" icon in the bottom right corner of the screen to enter Video Setting menu.
- 2) Slide up / down quickly in the gray area on the screen or press Up Button or Down Button to cycle through various options, tag the target option or press the "Shutter Button" to select the desired option to set.
- 3) Tap the "Return" icon in the bottom left corner of the screen or press the "Power Button" to exit.

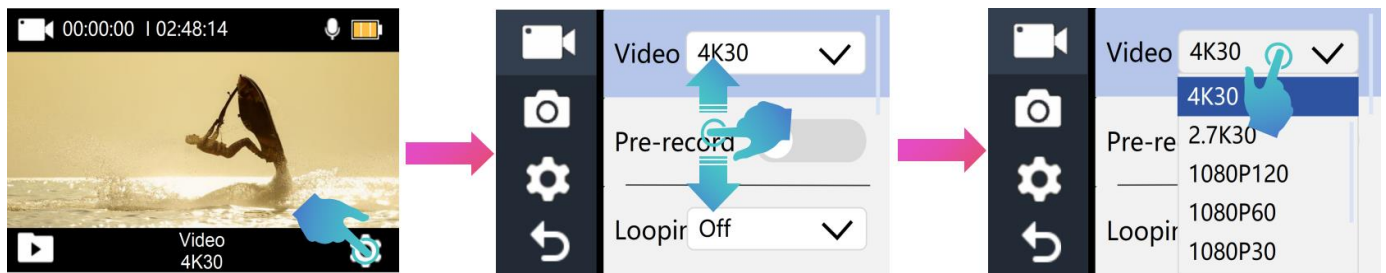
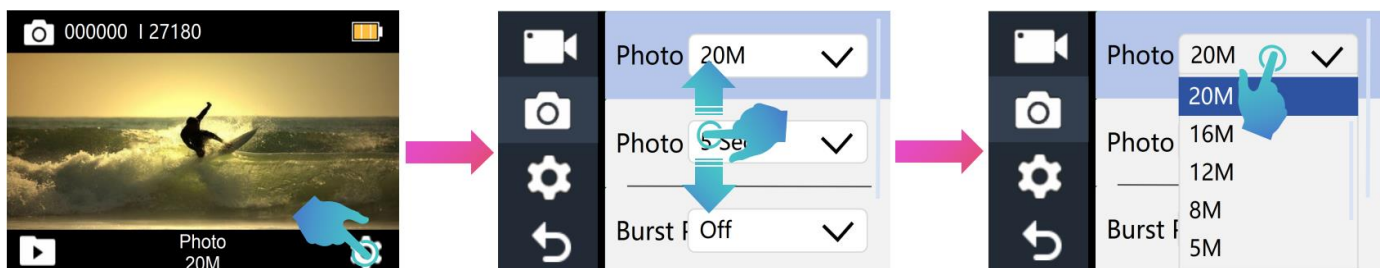


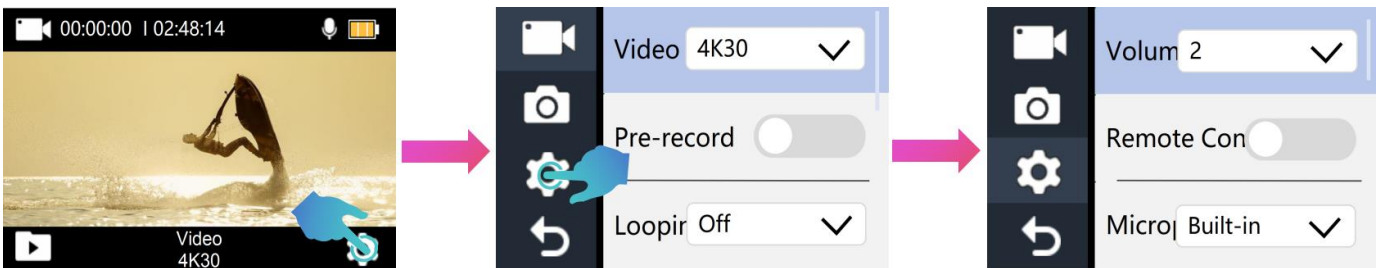
Photo Setting Mode

- 1) Verified in Photo Mode, tap the "Settings" icon in the bottom right corner of the screen to enter Photo Setting menu.
- 2) Slide up / down quickly in the gray area on the screen or press Up Button or Down Button to cycle through various options, tag the target option or press the "Shutter Button" to select the desired option to set.
- 3) Tap the "Return" icon in the bottom left corner of the screen or press the "Power Button" to exit.



■ System Setting Mode

- 1) Verified in Video / Photo Mode, tap the "Settings" icon in the bottom right corner of the screen to enter Video /Photo Setting menu.
- 2) Tap the "Settings" icon on the left side of the screen to enter the system settings menu. or press the "Power Button" to switch to the system settings menu.
- 3) Slide up / down quickly in the gray area on the screen or press Up Button or Down Button to cycle through various options, tag the target option or press the "Shutter Button" to select the desired option to set.
- 4) Tap the "Return" icon in the bottom left corner of the screen or press the "Power Button" to exit.



CONNECTING TO WIFI APP

The Wi-Fi App lets you control your camera remotely using a smart phone or tablet. Features include full camera control, live preview, playback and sharing of selected content and more.

■ Download and Install FUN DV app

- **Option 1:** Download the **FUN DV** App or to your phone from the Google Play or Apple App Store.
- **Option 2:** Scan the QR code below to download the **FUN DV** App or to your phone.



Android 7.0
or later



iOS 10.0
or later



Notes:

Google, Android, Google play, App Store and other marks are the trademarks of Google LLC.

■ Turn On / Off Camera Wi-Fi

- Turn on the camera, and verified it is in Video mode, slide down quickly on the screen

or Press and hold the Up Button three seconds to turn on the camera's Wi-Fi.

➤ In Wi-Fi mode, press the Up Button to turn off the camera's Wi-Fi.



■ Connect to the FUN DV APP

- 1) Turn on Carmera' s Wi-Fi;
- 2) Turn on Wi-Fi Setting of your phone, connect to the Wi-Fi SSID named "Action Cam _xxxx (Random serial number)" ;
- 3) Enter the password: "12345678" ;
- 4) Launch the "FUN DV" app on your phone.

REMOTE CONTROLLER

Place the Remote Control On Your Wrist and Acquiesce Ultra-convenient Control For Hiking,Biking, Skiing,Bungee and more while installing the camera on your Helmet or other place.

■ Remote Range: 5~8M

■ How to turn on/off the remote function

Select **ON/OFF** in the System Setting Menu to turn on/off the remote controller.

Note: Verify the camera is in Video/Photo preview mode first, if the camera is set in Playback or Setting Menu, the camera can not receive the remote signal and can not be controlled by the remote.

■ VIDEO

● **To start recording**

Press the Grey Video Button.

● **To stop recording**

Press the Grey Video Button again.



■ PHOTO

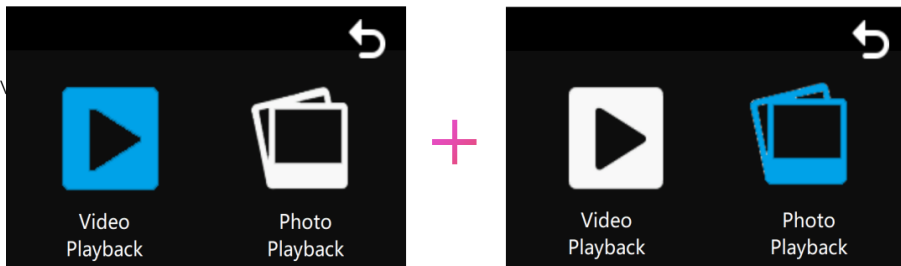
- **To take a photo**

Press the Red Photo Button. The camera will emit a camera shutter sound.

PLAYBACK & DELETE CONTENT

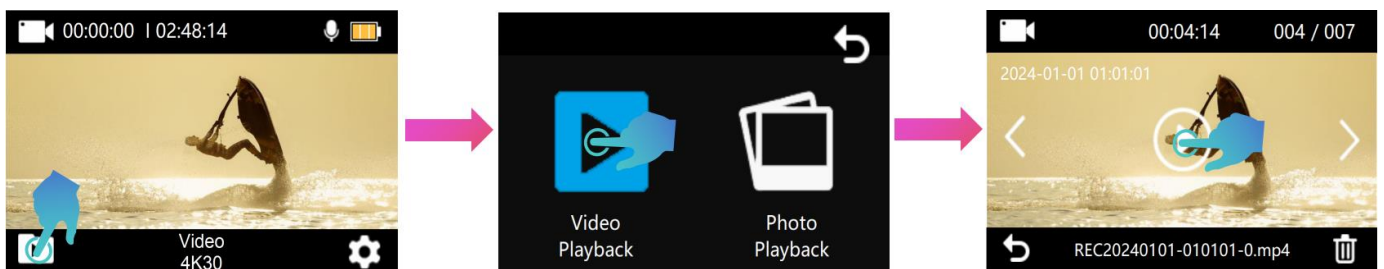
You can play back your content on the camera screen. You can also play back content by inserting the micro SD card directly into a computer or TV. With this method, playback resolution depends on the resolution of the device and its ability to play back that resolution.

2 Playback Mode: Video Playback Mode & Photo Playback Mode.



In Playback Mode, You can playback or delete your content on the camera.

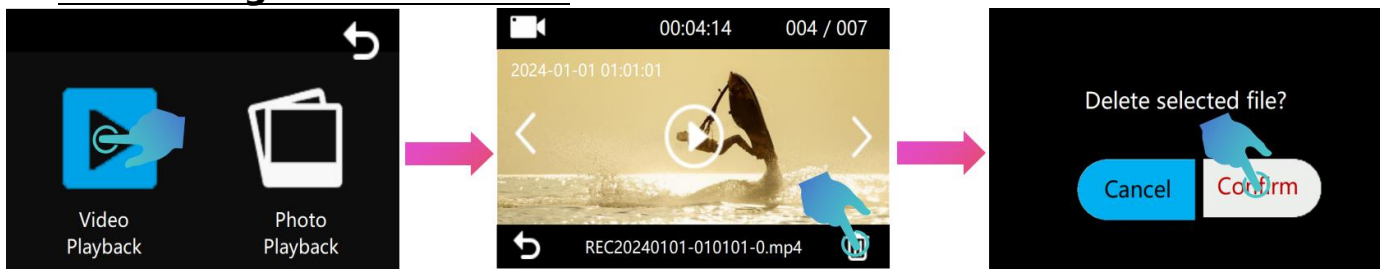
■ Playback videos and photos on your camera



1. Turn on camera.
2. Tap "Playback" icon at the left corner of the screen or Press and hold the Down Button for seconds to enter playback mode.
3. Tap "Video Playback" / "Photo Playback" icon to enter, Or press Up/Down Button to cycle though target Playback mode and press Shutter Button to select desired Playback mode.
4. Tap "Forward" or "Backward" icon, or press Up/Down Button to locate video files / playback photo files.
5. Tap "playback" / "Pause" icon or press Shutter Button to start/pause playing video file.
6. To exit, tap return icon or press Power Buttton.

Note: If your memory card contains a lot of content, it might take a minute for it to load.

■ Delete single file on camera



1. Enter Video / Photo Playback mode.
2. Tap "Forward" or "Backward" icon to locate the video or photo file
3. Tap the "Delete" icon in the bottom right corner of the screen or press and hold the Up Button for seconds to enter the file deletion menu.
4. Tap the "Confirm" icon to delete the selected file.

BATTERY

The camera contains sensitive components, including the battery. Avoid exposing your camera to very cold or very hot temperatures. Low or high temperature conditions may temporarily shorten the battery life or cause the camera to temporarily stop working properly. Avoid dramatic changes in temperature or humidity when using the camera, as condensation may form on or within the camera.

■ Battery Storage and Handling

- Do not store in temperature above 140°F/60°C.
- Avoid exposing your camera to very cold or very hot temperatures. Low or high temperature conditions may temporarily shorten the battery life or cause the camera to temporarily stop working properly. Avoid dramatic changes in temperature or humidity when using the camera, as condensation may form on or within the camera.
- Do not dry the camera or battery with an external heat source such as a microwave oven or hair dryer.
- Damage to the camera or battery caused by contact with liquid inside the camera is not covered under the warranty.
- Do not store your battery with metal objects, such as coins, keys or necklaces. If the battery terminals come in contact with metal objects, this may cause a fire.
- Do not make any unauthorized alterations to the camera. Doing so may compromise safety, regulatory compliance, performance, and may void the warranty.
- Please do not throw the camera or its battery to the garbage, find a specific recycling point for it.

WARNING: 

- ◆ Do not drop, disassemble, open, crush, bend, deform, puncture, shred, microwave, incinerate or paint the camera or battery.
- ◆ Do not insert foreign objects into the battery opening on the camera.
- ◆ Do not use the camera or the battery if it has been damaged - for example, if cracked, punctured or harmed by water. Disassembling or puncturing the battery can cause an explosion or fire.

■ Charging the Battery

1. Connect the camera to USB power supply (5V/1A commended).
2. The charging status light remains ON while the battery is charging.
3. The charging status light will turn OFF when the battery is fully charged.

Notes:

- ✧ Charging time: 4-hours for 5V 1A power supply
- ✧ Please make sure the camera is shuttled down while charging.
- ✧ Remove the battery before using as a dash camera and use 5V/1A car charger.

■ Maximizing Battery Life

If the battery reaches 0% while recording, the camera saves the file and powers off.

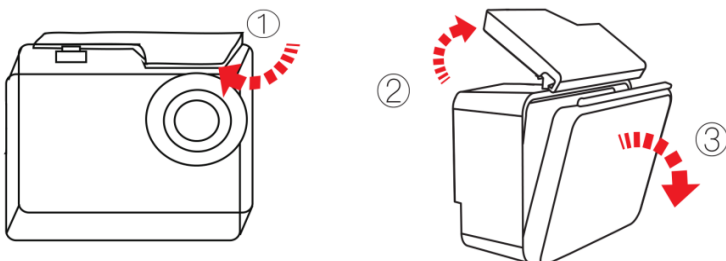
To maximize battery life, follow these guidelines when possible:

- Turn off Wireless Connections
- Capture video at lower frame rates and resolutions
- Use Screen Saver setting.

WATERPROOF CASE

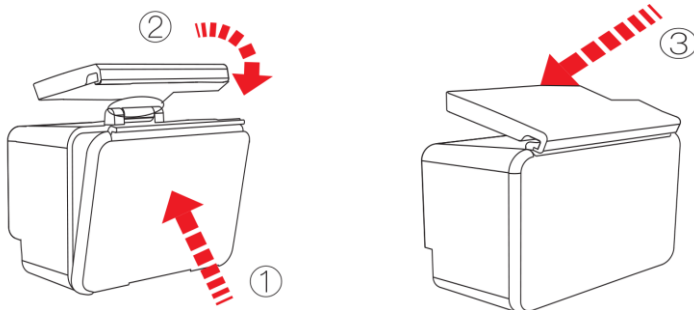
Specially designed for diving, surfing, snorkeling and other water sports activities. The waterproof case does not only offer greater waterproof protection to your camera, it also offers extra protection against dust, scratches and shocks. Light and easy to carry, excellent PMMA material endows it with high quality. With the use of the waterproof case, you can record activities even 30M under water and it won't damage the shooting effect, clear and vivid. Your movement and photographic effect won't be affected by anti-surf pressure. Convenient to link camera with other accessories mount through this waterproof case.

■ How to open the waterproof case:



- 1) Pick the black latch up on the top of the case.
- 2) Pull up the buckle of the case.
- 3) Open the back cover of the case.

■ How to close the waterproof case:



- 1) Please close the back door of the case.
- 2) Pull down the latch and lock it to the back door.
- 3) Press down the buckle.

Tips:

- Please tear the protective films on the waterproof case lens before shoot/record;
- To achieve better waterproof performance, the voice record within the waterproof case will be weakened.

■ Usage Notes



In order to ensure the waterproof performance, please carefully refer to the operation and maintenance precautions as following. The machine is not waterproof due to improper operation and improper maintenance, which is not covered by the warranty.

- In order to capture a clear video or photo, please tear off the lens protection film of the waterproof shell before use, and protect well the lens window from scratch after use.
- Before sealing the waterproof case, keep the camera housing' s White Silicone Seal Ring clean, a single hair or grain of sand cause a leak. You can test by closing the case without inserting the camera. Submerge the case completely in the water for about a minute. Remove the case from the water, dry off its exterior with a towel, and then open the case. If the interior is dry,the case is safe for use under water.
- Before sealing the waterproof case, make sure the waterproof case is sealed well before use.If the white silicone sealing ring is found to be hardened, deformed or damaged, please stop using this water tank and replace the new waterproof shell in time
- Please dry it in time after use, otherwise the waterproof shell metal button will dust and reduce the waterproof performance. After use in in seawater or seaside, you will need to rinse the outside of the housing with fresh water and then dry. This will

prevent corrosion of the hinge pin and salt buildup in the seal, which can cause failure.

Do not flush the interior with water

- When use the camera with the waterproof in low temperature, such as Winter, Rainy Day, Underwater and so on, please do the anti fogging treatment so as to avoid the blurred video. It is recommended to add anti-fog film; insert the anti-fog film into the waterproof case to prevent the lens from fogging in low temperature or humid environment;
- Keep it safe from falling and dropping and high temperature above 80°C.
- Waterproof shell is vulnerable product, we strongly recommend ,according to the usage of the environment and frequency, to replace the waterproof shell in time.

SAFETY WARNINGS

- This is a 4K action camera, It is normal for the housing to exert heat under use. Don' t expose the product directly to high temperatures over 50°C.
- Keep it safe from falling and dropping.
- Do not place heavy objects on the camera.
- Keep it distance from any strong magnetic interference objects like electrical machine to avoid strong radio waves that might be damaging the product and affect the sound or image quality.
- Keep the camera away from water and liquids (unless equipped with waterproof case). This may cause the the camera to malfunction.
- Don' t place your SD card near strong magnetic objects to avoid data error or loss.
- In case of overheating, unwanted smoke or unpleasant smell from the device, unplug it immediately from the power outlet to prevent hazardous fire.
- Keep it safety from children while on charging.
- Stored the device in a cool, dry and dust free location.
- Do not attempt to open the case of the camera or modify it in any way,if the camera has been detached,the warranty will be void

Specification could be subject to modification due to updating without notice, please regard the actual product as the standard form. If need the newest updated software,please contact our after sale service team!

CONTACT US

For any inquiries, issues or comments concerning our products, please send E-mail to the address below or call us. We will respond as soon as possible.

E-mail: cs@onlincam.com

Web: www.onlincam.com